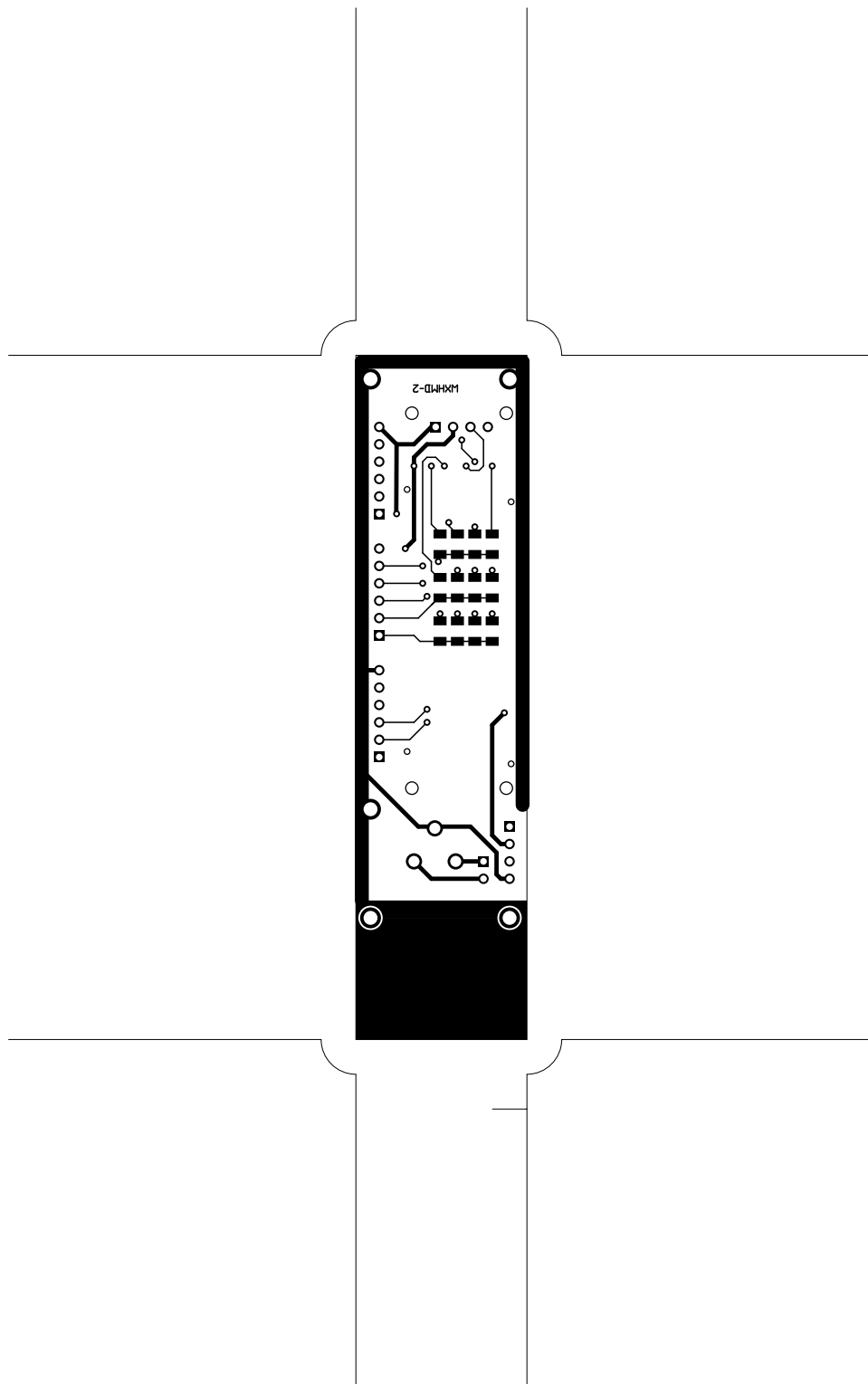
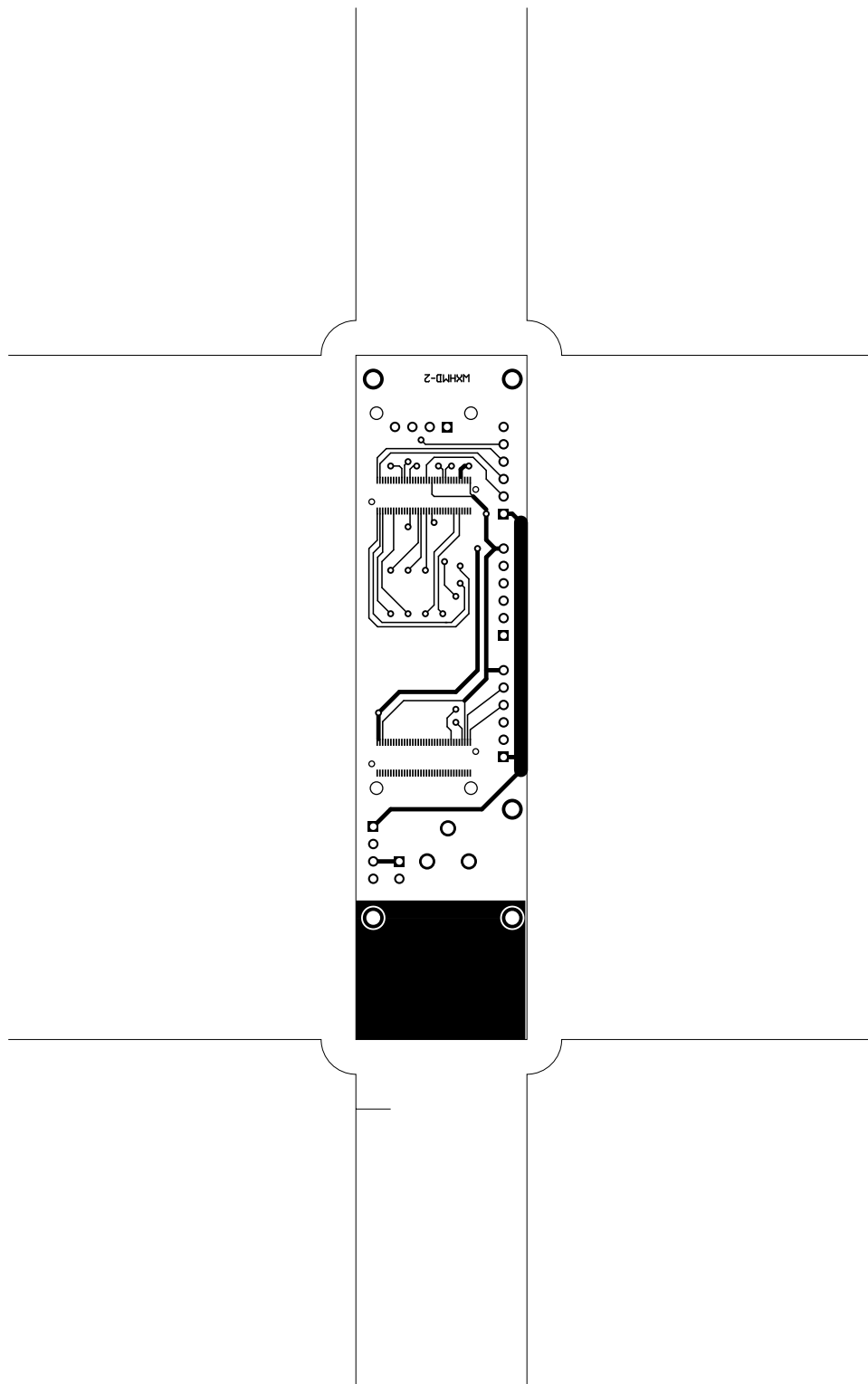
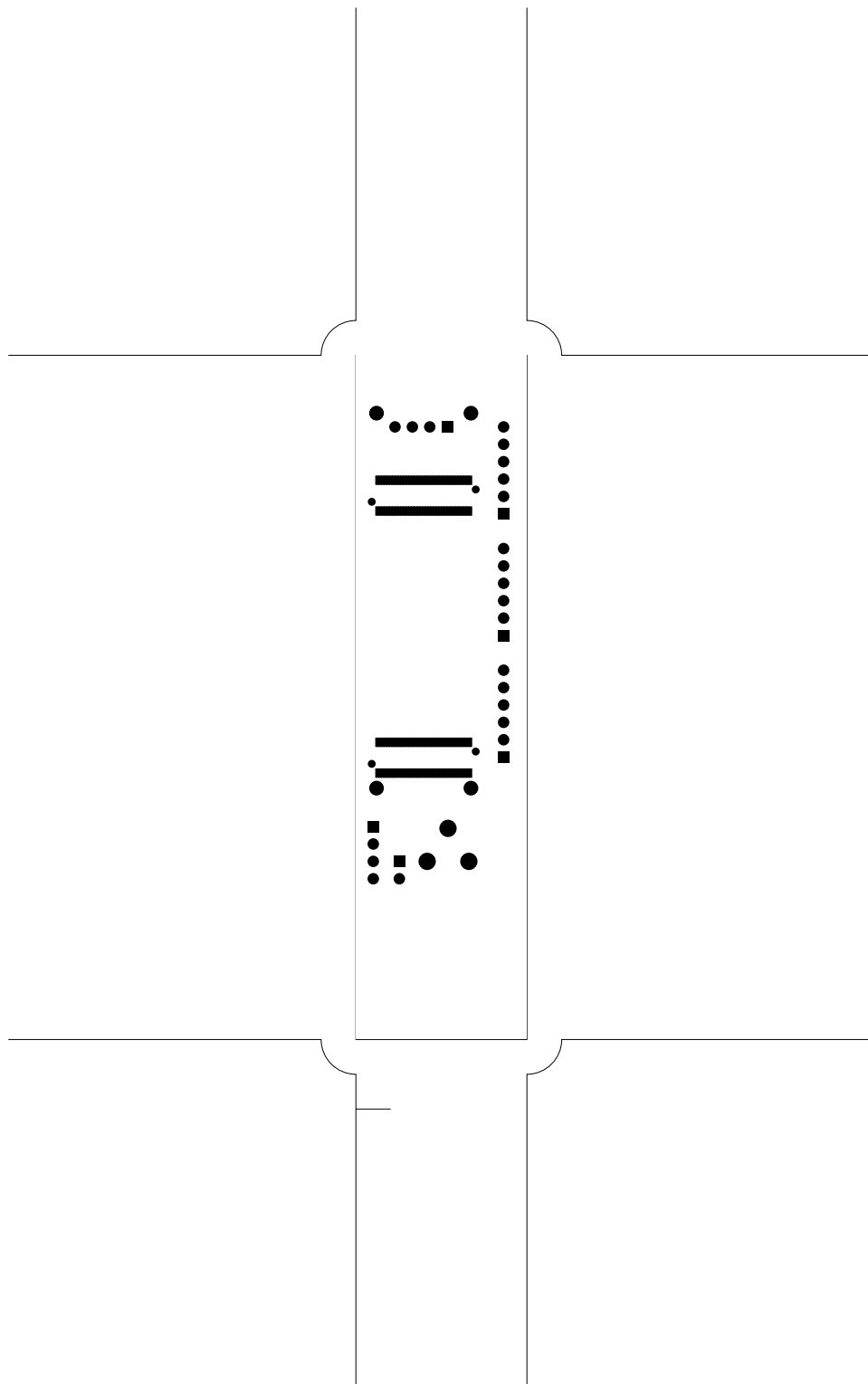
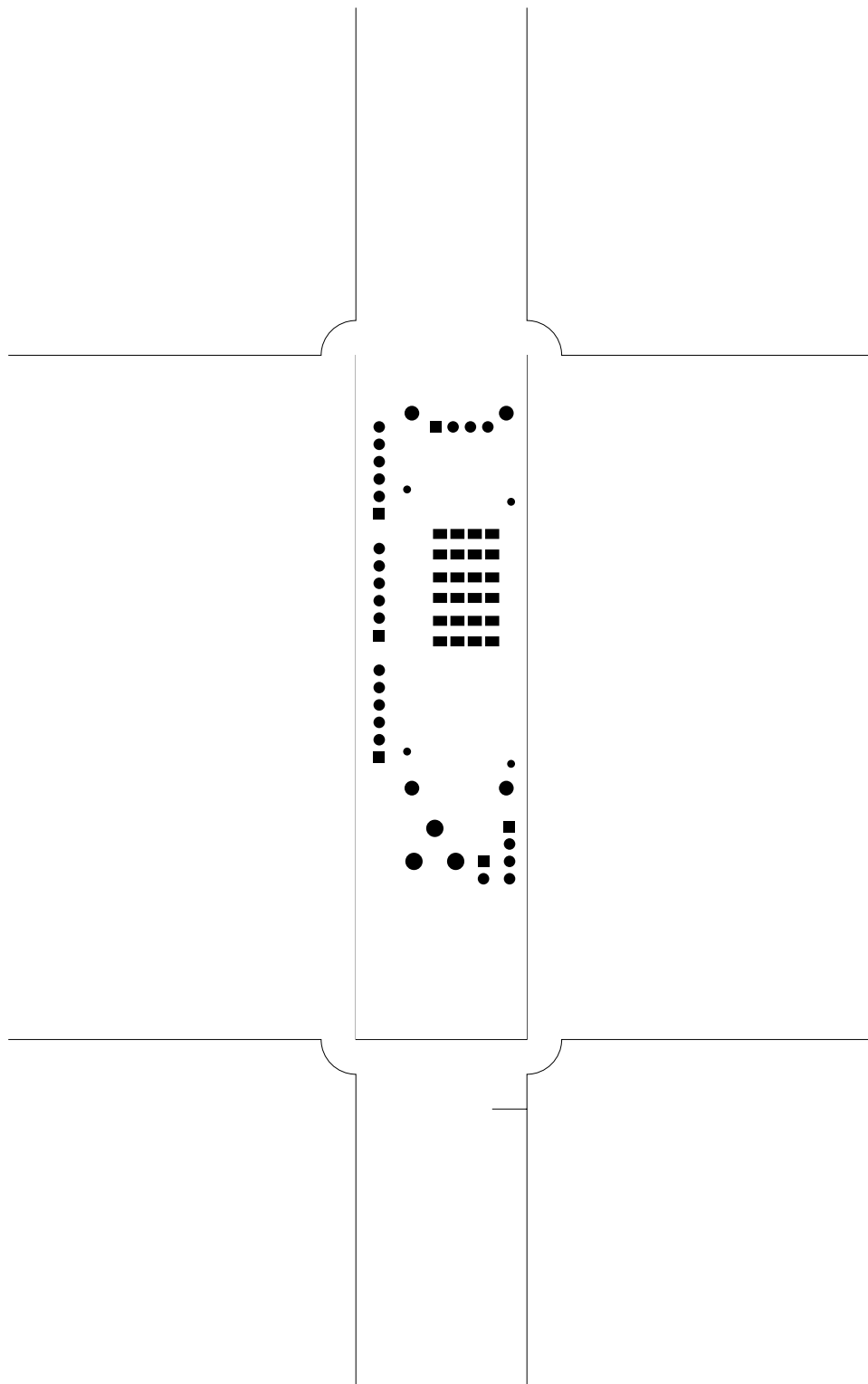


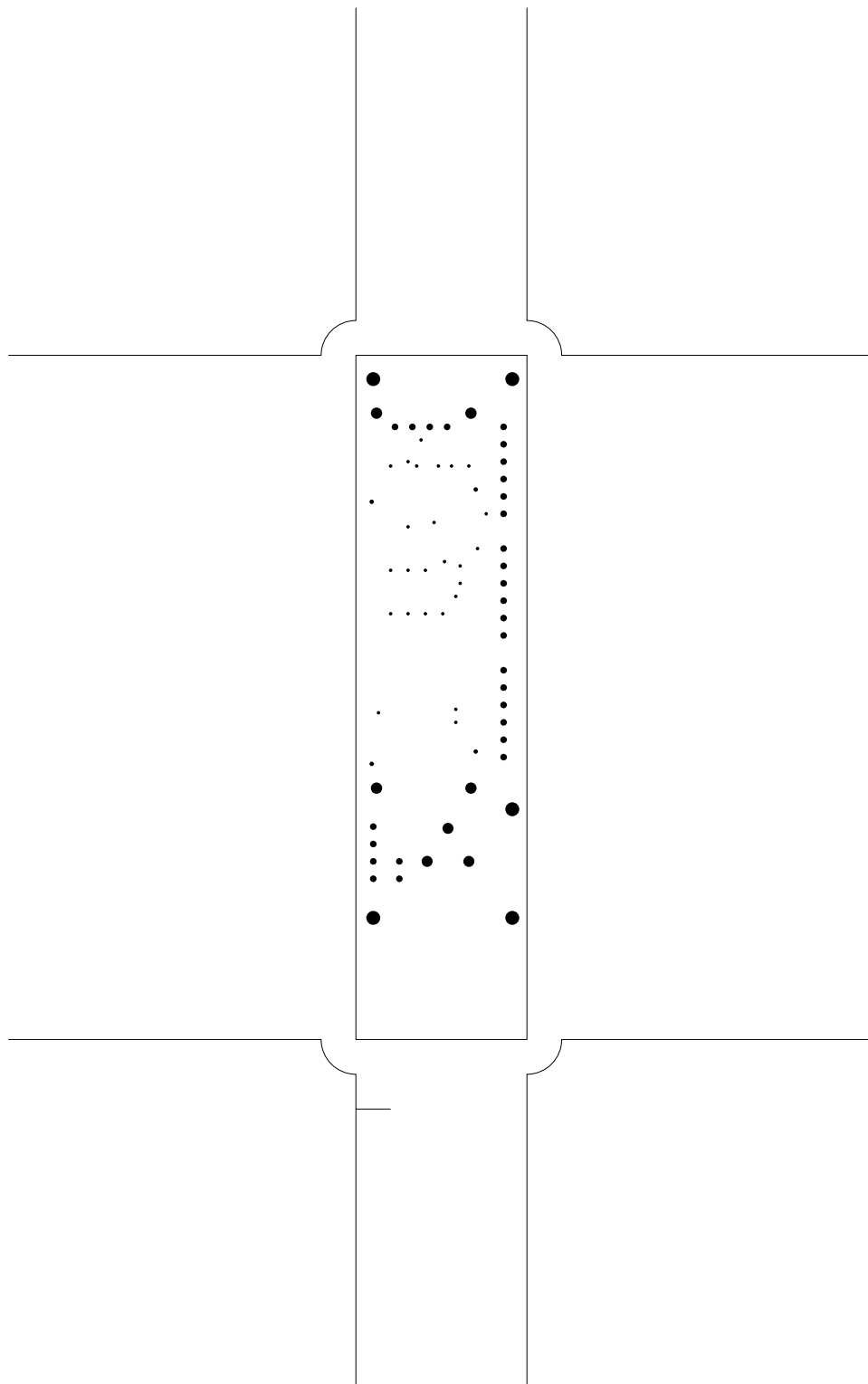
2. solder
3. component
4. componentmask
5. soldermask
6. plated-drill
7. topsilk
8. bottomsilk
9. bottompaste
10. toppaste
11. topassembly
12. bottomassembly
13. fab

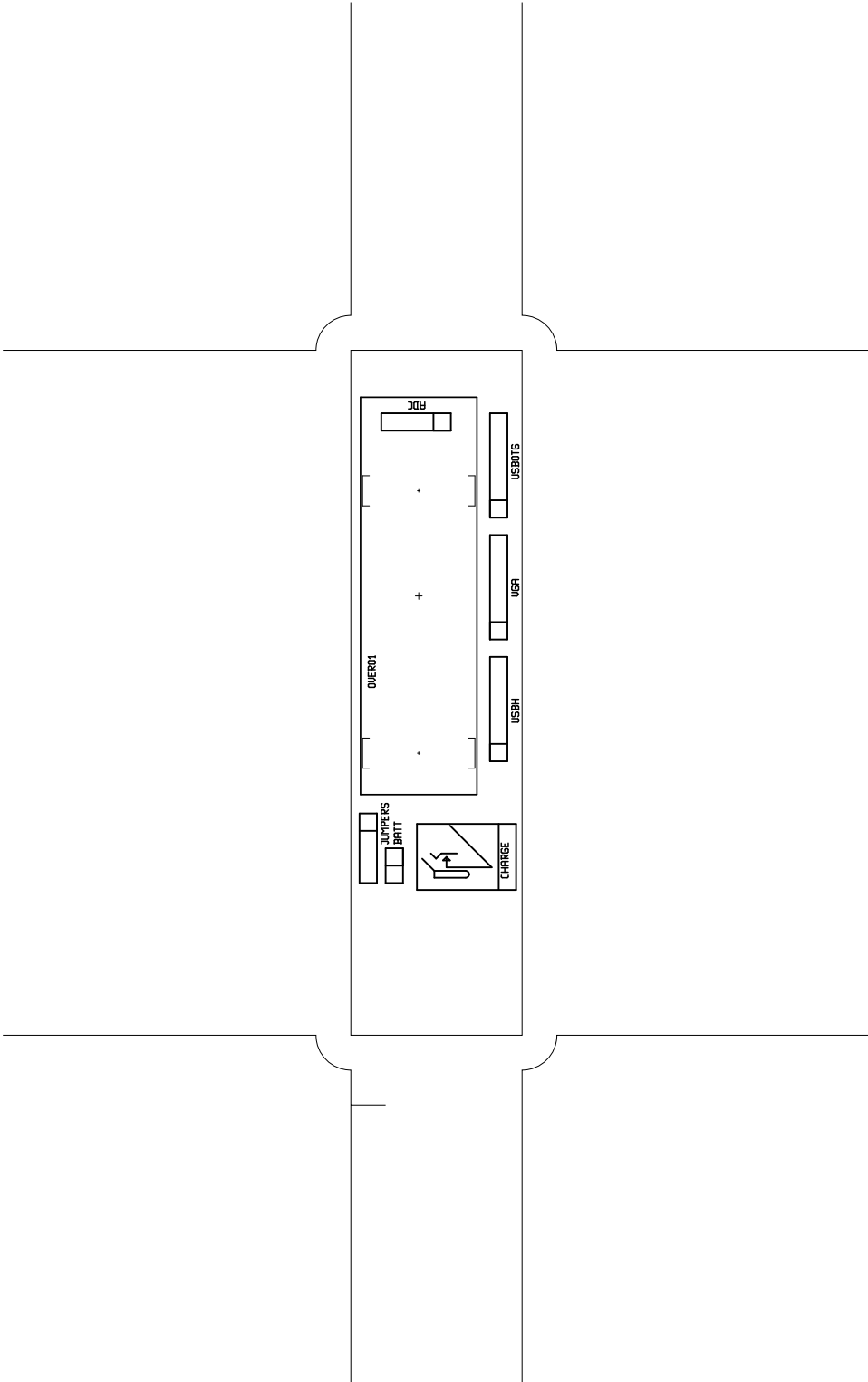


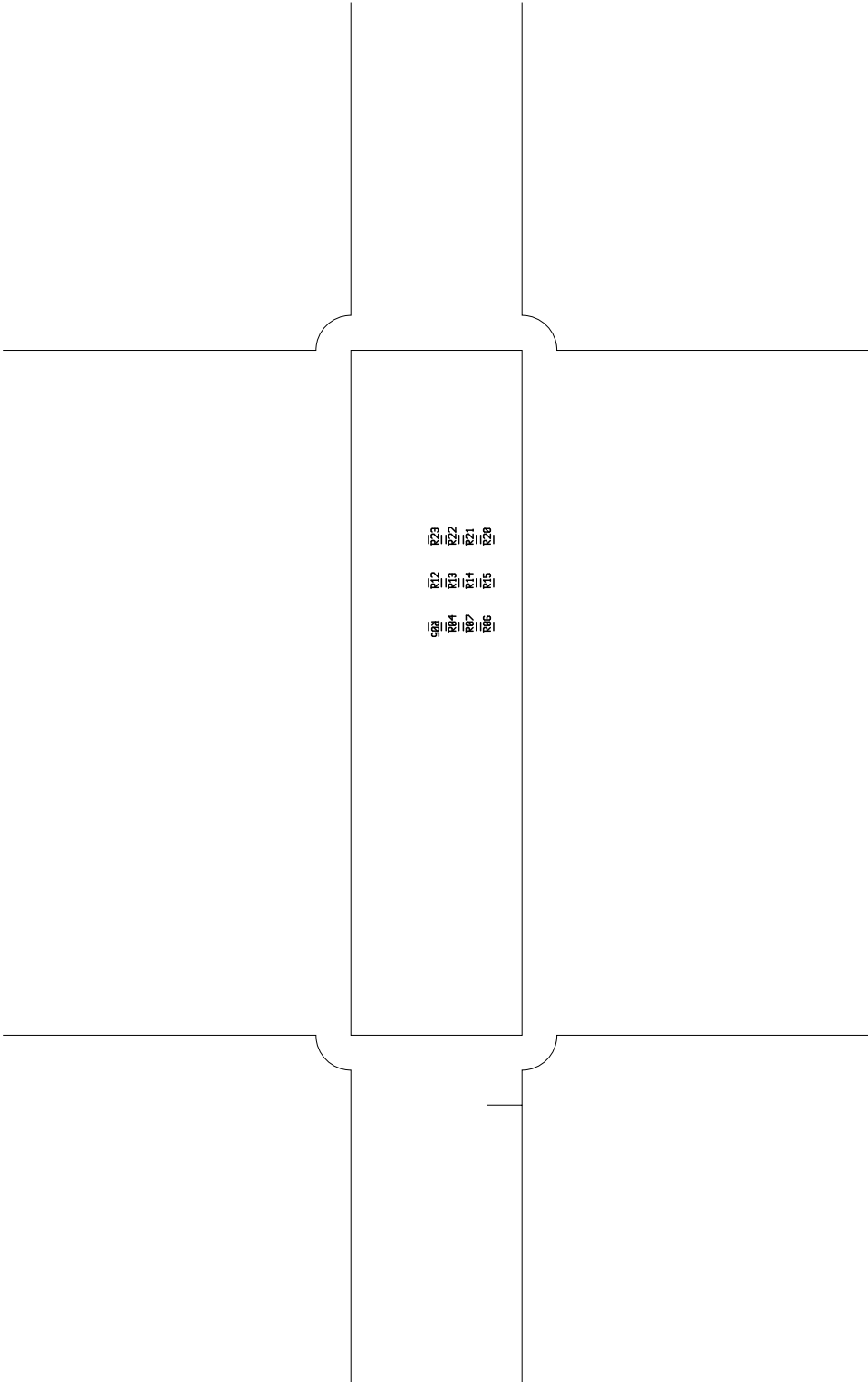


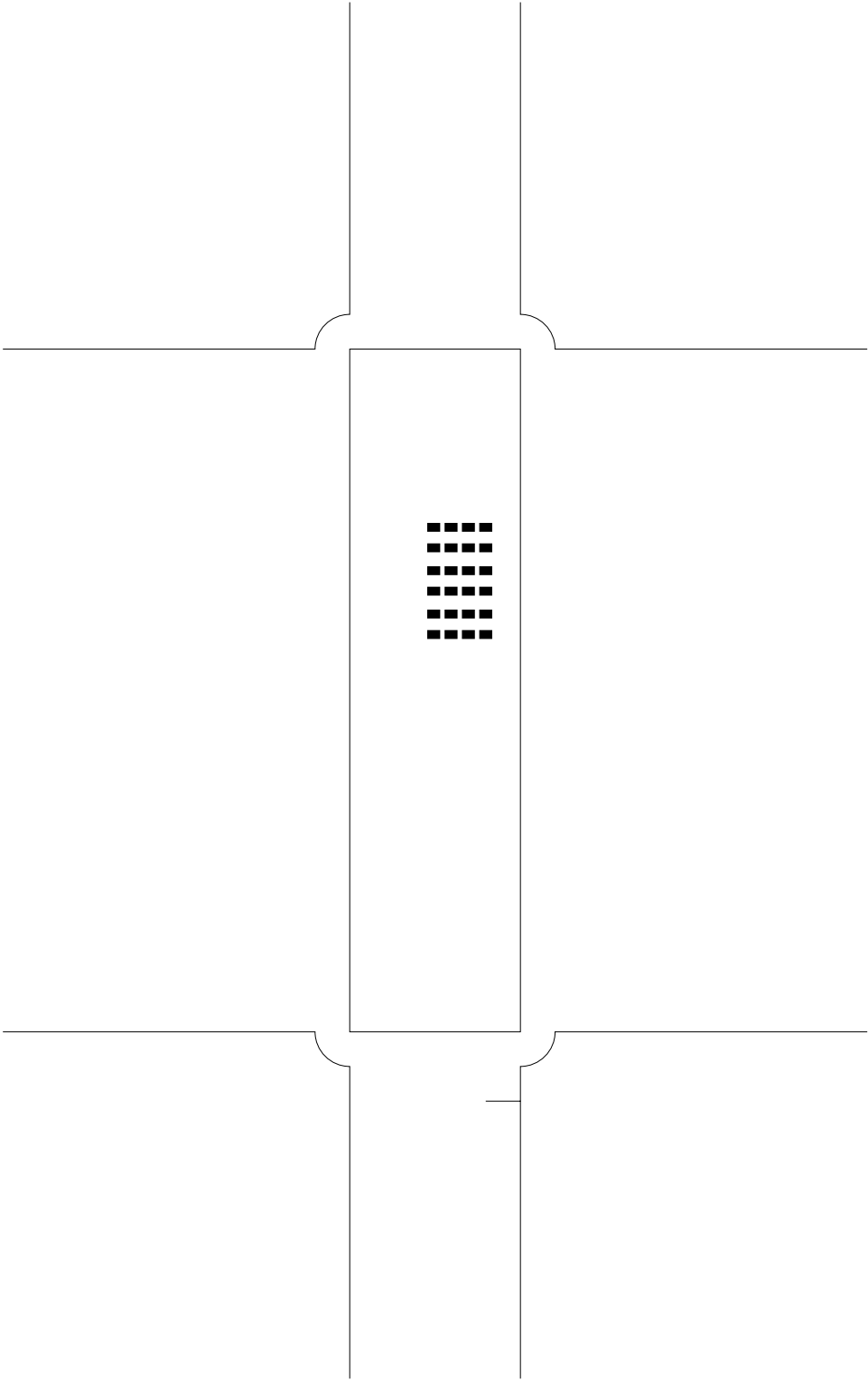


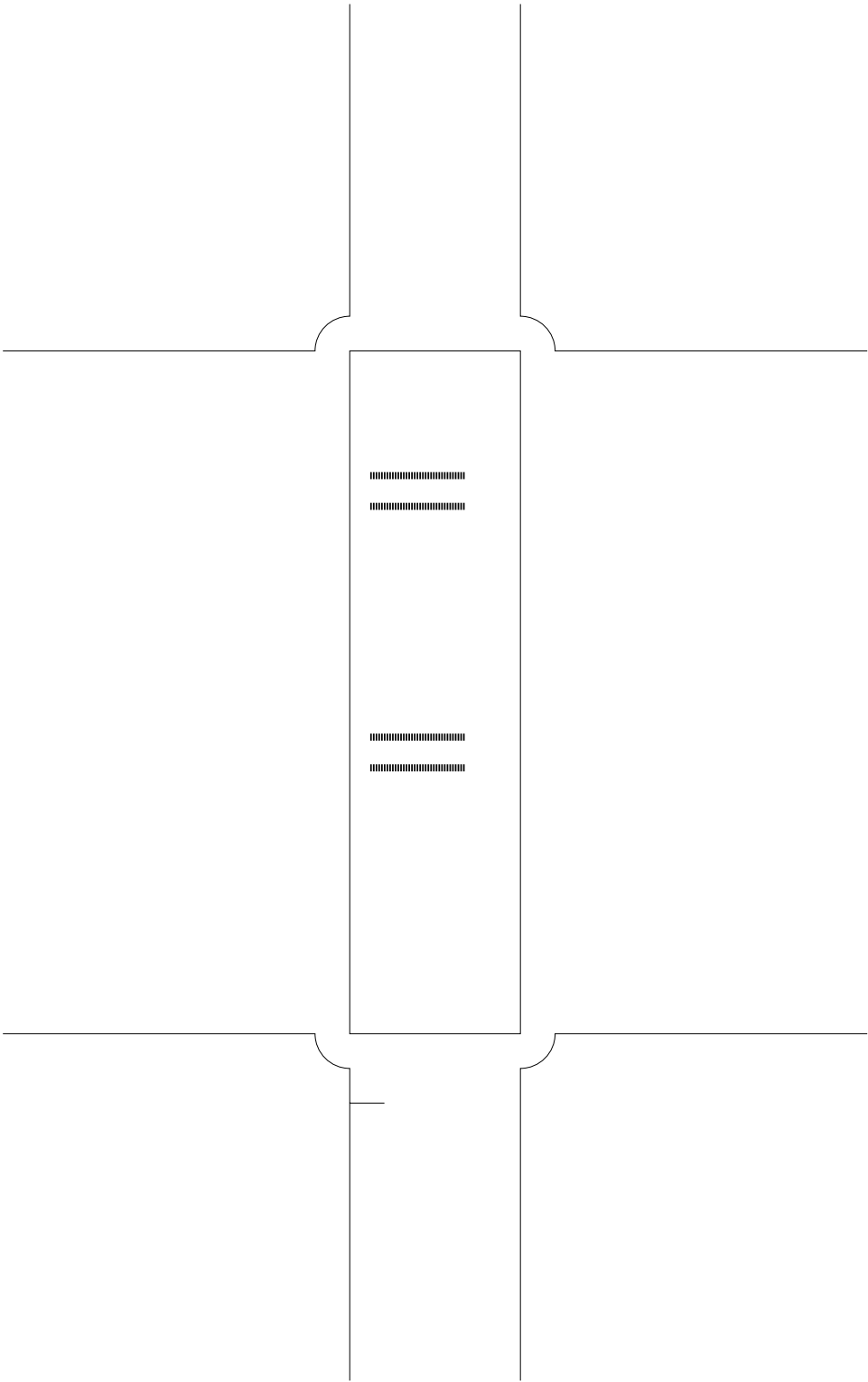


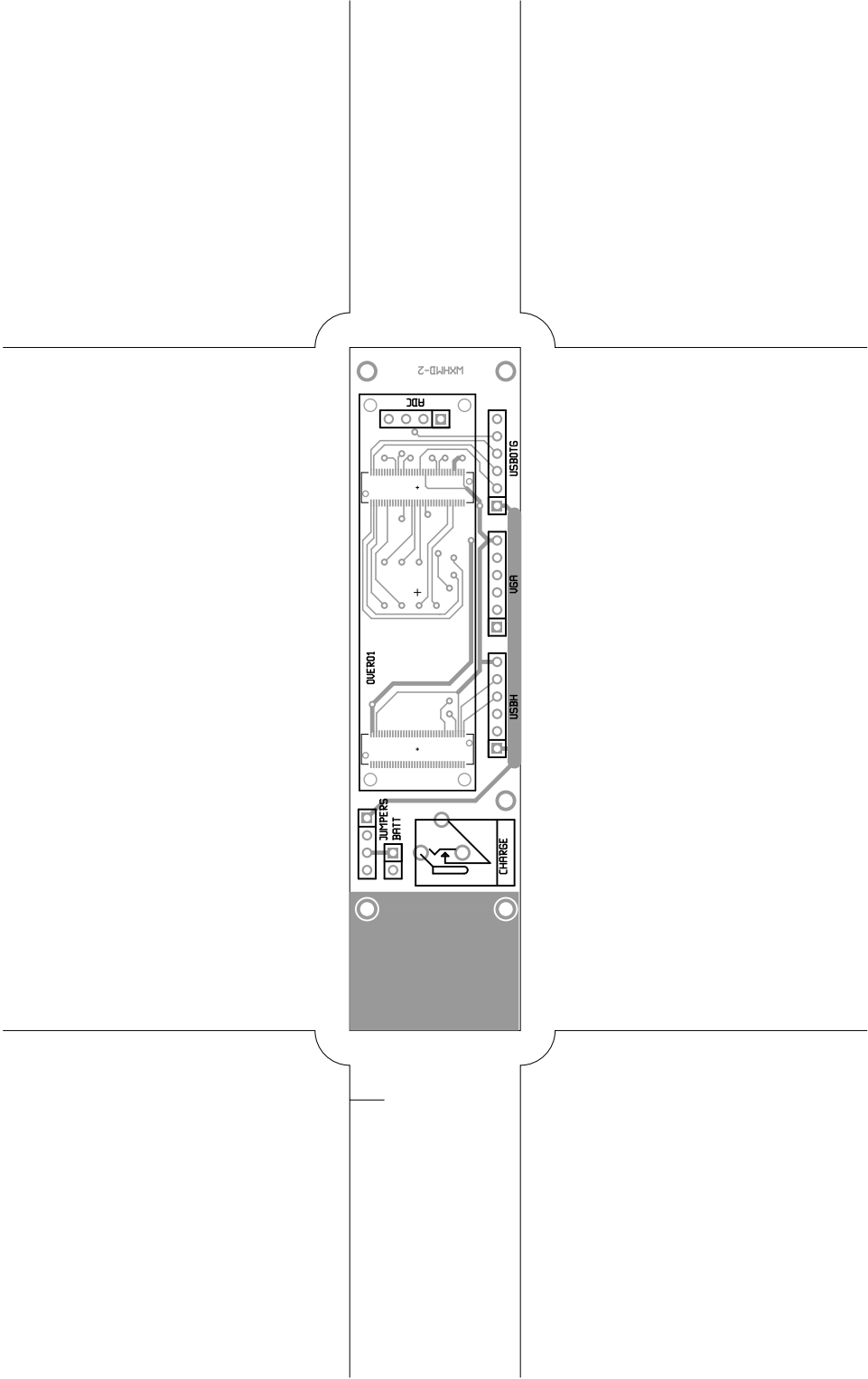


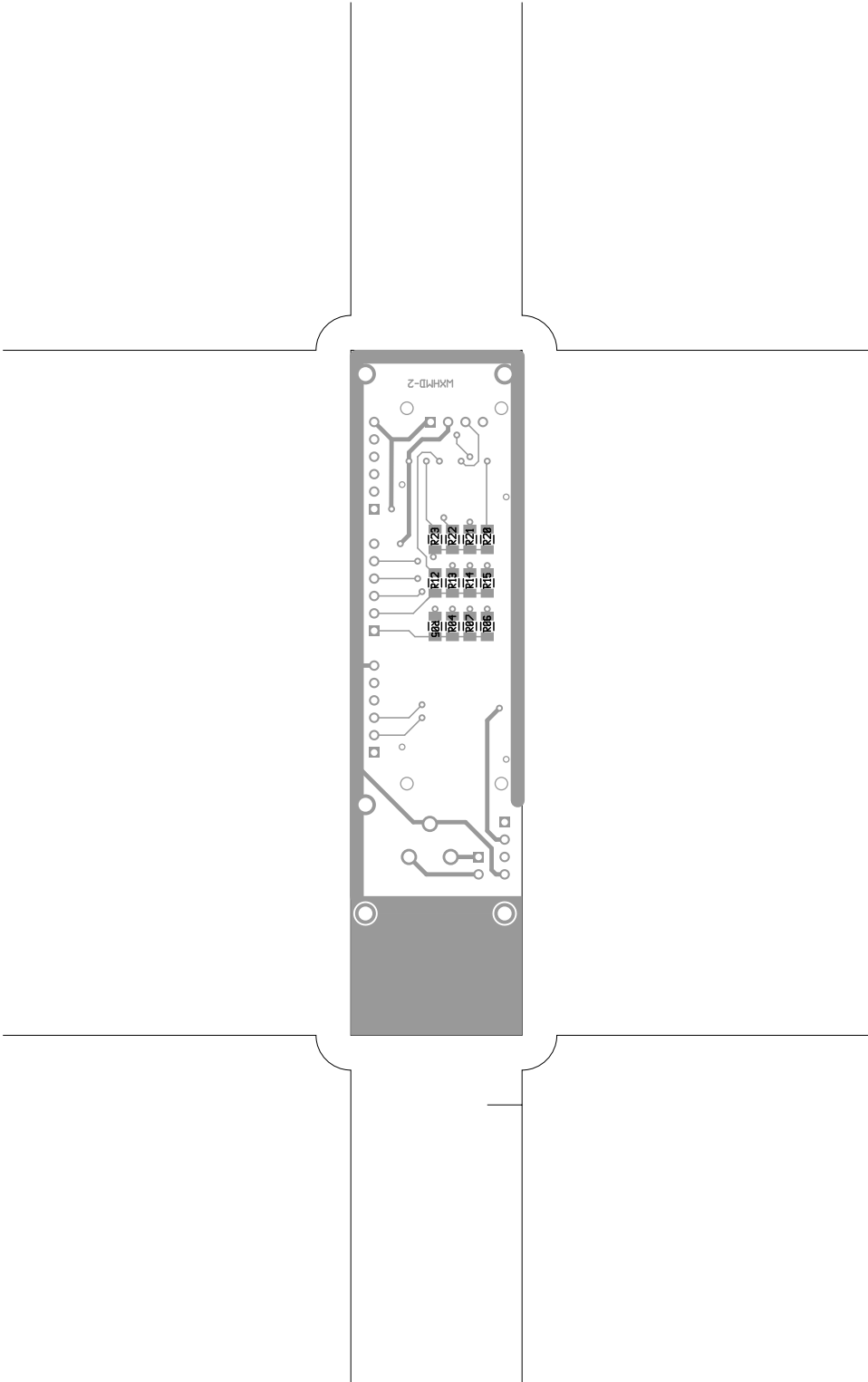












backassembly (mirrored), scale = 1:1.000
wxhmd2.pcb

There are 6 different drill sizes used in this layout, 69 holes total

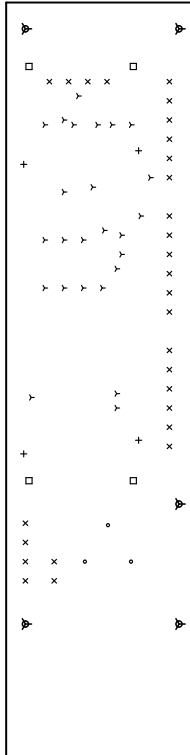
| Symbol | Diam. (Inch) | Count | Plated? |
|--------|--------------|-------|---------|
| y | 0.020 | 25 | YES |
| + | 0.026 | 4 | YES |
| x | 0.038 | 28 | YES |
| o | 0.064 | 3 | YES |
| □ | 0.065 | 4 | YES |
| ▽ | 0.080 | 5 | YES |

Title: (unknown) - Fabrication Drawing

Author:

Date: Thu 20 Aug 2009 12:05:32 AM GMT UTC

Maximum Dimensions: 3937 mils wide, 984 mils high



Board outline is the center-line of this 10 mil rectangle - 0.0 to 3937, 984 mils